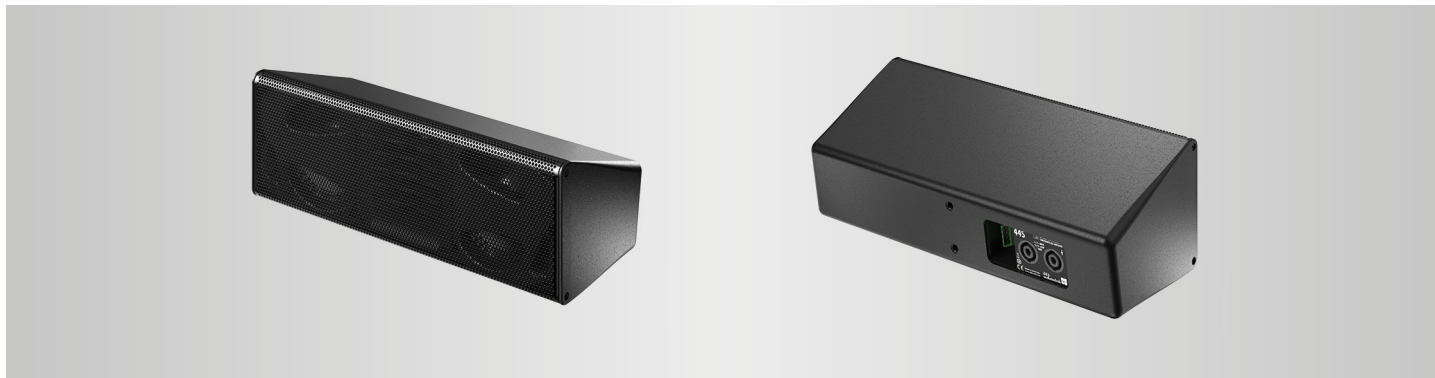


The 44S loudspeaker



44S loudspeaker

The 44S is a passive 2-way design housing two 4.5" neodymium LF drivers built into a bass-reflex design and two 1.25" HF dome tweeters mounted on a rotatable CD horn thus providing rotatable dispersion characteristics (h x v) of 90° x 30° and 30° x 90° respectively. The frequency response extends from 90 Hz to 17 kHz.

The loudspeaker can be used as a stand-alone system or supplemented by actively driven d&b subwoofers.

The 44S is a highly directive ultra compact loudspeaker with an asymmetric cabinet shape. In horizontal orientation, the 44S can be used as a frontfill loudspeaker.

The enclosure is injection molded with an impact resistant paint finish. The front of the cabinet is protected by a rigid metal grill.

Two M8 threaded inserts are incorporated in the back panel to connect to different rigging accessories.

Different brackets enable mounting to walls, under ceilings or balconies or any other suitable surfaces such as floors as a single unit (Z5423/ Z5424) or in closely coupled clusters of two cabinets (Z5423 with Z5425).

Using the swivel bracket (Z5426), it can be used as a main or fill system, flown or mounted on a high stand.

The optional d&b Z5427 44S Backbox is a solution for flush mounting the loudspeaker into ceilings or walls, either in horizontal or vertical position. The back box is just 140 mm high making it an ideal solution for in-stair mounting.

Within the back box, the loudspeaker can be aligned by 20° in 5° increments.

d&b amplifiers

The d&b audiotechnik loudspeaker range is designed exclusively for operation with d&b amplifiers. These provide power as well as comprehensive control and protection functions tailored to achieve the performance, reliability and longevity associated with the d&b system approach.

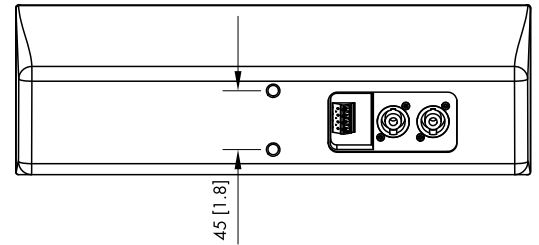
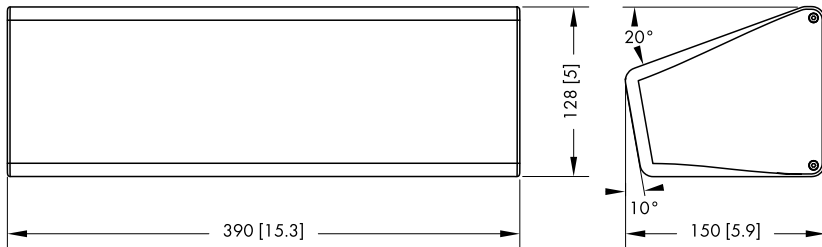
System data

Frequency response (-5 dB standard).....	90 Hz - 17 kHz
Frequency response (-5 dB CUT mode)	150 Hz - 17 kHz
Max. sound pressure (1 m, free field)	
with D6/10D	121 dB
with D80/D40/D20/40D/30D	123 dB
..... (SPLmax peak, pink noise test signal with crest factor of 4)	

Loudspeaker data

Nominal impedance	16 ohms
Power handling capacity (RMS/peak 10 ms)	150/500 W
Dispersion angle (h x v)	90° x 30°
Components	2 x 4.5" driver with neodymium magnet
.....	2 x 1.25" dome tweeter mounted on CD horn
.....	Passive crossover network
Connections	4-pin Phoenix Euroblock and 2 x NL4 M
.....	Phoenix plug type: MSTB 2,5/ 2-ST-5,08
Pin assignment	Phoenix: 1: + / 2: - / 3: + / 4: -
.....	NL4 M: 1+/1-
Weight	3.6 kg (8 lb)

The 44S loudspeaker



44S cabinet dimensions in mm [inch]

xS-Series features and benefits

- Two 4.5" LF drivers built into a bass-reflex design and 2 x 1.25" HF dome tweeters mounted on a rotatable CD horn thus providing rotatable dispersion characteristics (h x v) of 90° x 30° and 30° x 90° respectively.
- Unobtrusive asymmetrical cabinet design ensures flexible setup options and easy integration within any permanent installation including flush mounted fitting
- High directivity ensures even distribution in the low mids
- SPL_{max} 123 dB
- Ability to create clusters of two loudspeakers (more SPL with less interferences than point sources)
- High directivity with an emphasis on clarity of voice reproduction
- Custom solutions options available (upon request)
- Compatible with all current d&b amplifiers

Applications

- Theatres
- Concert halls
- House of Worship
- Conference facilities
- Restaurants
- Clubs and live music venues
- Cruise ships
- Corporate and industrial events
- Conference/presentation/teaching facilities

Architectural specifications

The loudspeaker shall be passive 2-way design housing two 4.5" neodymium drivers built into a bass-reflex design and two 1.25" HF dome tweeters mounted on a rotatable CD horn thus providing rotatable dispersion characteristics of 90° x 30° (hor. x vert.). The frequency response shall extend from 90 Hz to 17 kHz. The loudspeaker shall be used as a stand-alone system or supplemented by actively driven subwoofers.

The cabinet shall be a compact mechanical design with an asymmetric cabinet shape. The enclosure shall be injection molded with an impact resistant paint finish. The front of the cabinet shall be protected by a rigid metal grill. Two M8 threaded inserts shall be incorporated in the back panel to connect to different rigging accessories.

A swivel bracket shall be available to allow the loudspeaker to be used as a main or fill system either flown or mounted on a high stand. In horizontal orientation, the cabinet shall be usable as a frontfill loudspeaker.

Different brackets shall enable mounting under ceilings or balconies as a single unit or in closely coupled clusters of two cabinets.

An optional back box shall be available for flush mounting the loudspeaker into ceilings or walls, either in horizontal or in upright position. Within the back box, the loudspeaker shall be able to be tilted up or down by 20° in 5° increments. The back box shall be just 140 mm high to allow in-stair mounting.

The loudspeaker shall only be operated by a dedicated, compatible controller amplifier.

The power handling capacity shall be 150 W RMS and 500 W peak (10 ms). The frequency response (-5 dB) measured on axis shall be 90 Hz to 17 kHz with a maximum sound pressure of at least 123 dB. The dimensions (W x H x D) shall not exceed 390 x 128 x 150 mm (15.3" x 5" x 5.9") and shall weigh no more than 3.6 kg (8 lb).

The loudspeaker shall be the 44S by:
d&b audiotechnik GmbH & Co. KG.